



Vehicle Mounted Terminals Slim, rugged and powerful – VMT9000 series

adstec

Industrial IT



Terminal VMT9000 series

Industrial IT platforms for warehousing and logistics, MES applications as well as agricultural and construction machinery **Technology for Professionals**

That's something you can count on. For more than three decades, ADS-TEC has continuously provided powerful edge PC technology with an industrially-oriented design. Our complete depth of development and the state-of-the-art processes are the basis for customer-oriented products and individual solutions. Technology 100% made in Germany – a good feeling for ADS-TEC customers.



VMT9000 series **Vehicle terminals of the fifth generation**

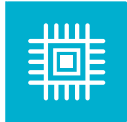
With its technologically advanced design and exceptional quality, the VMT9000 series is carrying on the tradition of award-winning ADS-TEC operating devices. The family of terminals and its wide range of features were developed specifically for the target markets of logistics and agricultural and construction machinery on the basis for almost 40 years of industry-specific experience. The VMT9000 series is characterised by an especially robust design to ensure reliable function even under the most demanding conditions.

With the VMT9000 series, you can select from freely configurable features based on the latest industrial-grade PC technology according to your company's individual needs.

VMT9000 Series Product Benefits

HIGHLIGHTS

- Designed for the toughest environments
- Interruption-free data transmission
- Multi-OS capable
- Compact design grants best overview on vehicles



Powerful

- Equipped with the Intel Atom® series x7-E3950 (Apollo Lake)



Sunlight readable

- Optimum readability in difficult visibility conditions
- Reliable functionality even outdoors



Touch screen

- Select between resistive and capacitive touch screen
- Both touch screen variants can be operated with gloves
- Extremely break- (IK08) and abrasion-resistant front sides



Robustness

- IP66 certified
- Vibration and impact resistance acc. to class 5M3
- Wide operating temperature range from -30°C to +60°C
- Sturdy aluminium die-cast case
- Resistant to a wide range of chemicals and UV radiation as well as adverse weather conditions
- Screwless design for simplified cleaning



Power supply

- Wide-range power adapter for flexibly connecting a 12 V - 48 VDCIN power supply
- Input voltage range 9 - 60 VDCIN



Sensors & data security

- Automatic brightness adjustment
- Integrated proximity and acceleration sensor
- User identification via RFID
- Smartcard-secured VPN tunnel and integration in the ADS-TEC IIoT Service Platform Big-LinX®



Wireless – Wi-Fi, Bluetooth, WWAN and GPS

- The latest Wi-Fi standards for optimum roaming behaviour
- External antenna can be connected in the case of difficult transmission and reception conditions
- WWAN and GPS for outdoor applications
- Bluetooth for connecting scanners, etc.



UPS

- UPS function allows to work without interruption, even if the forklift battery needs to be replaced
- UPS integrated in the interface cover, making it easy to replace
- Provides power up to 1.5 hours







Ignition function on vehicles

- Terminal is switched on by means of ignition voltage
- The system is either disabled or shut down when the ignition key is removed

Security through software tools and ADS-TEC service

Focus is on the customer **Services and individual configuration**

ADS-TEC continues to support you after you purchase a device and offers various service agreement options. Furthermore, the VMT9000 series with Big-LinX – the IIoT Service Platform from ADS-TEC – is prepared for Industry 4.0 applications in logistics.

	without service package				
Protection against technical malfunctions	– *	✓	✓	✓	–
Contract term	– *	36/60 months	36/60 months	36/60 months	–
Processing time of the industrial IT product in the event of service	20 AT	10 AT	5 AT	3 AT	–
Protection against mechanical damages	– *	–	–	–	–
Assumption of repair costs also for mechanical damages	– *	–	–	–	✓

ADS-TEC Services **The packages at a glance**

In order to cover technical malfunctions it is possible, beyond the statutory warranty, to purchase an ADS-TEC industrial IT product for an extended service. In this way, it is possible to have longer-term protection against repair costs due to technical malfunctions.



Big LinX® IIoT Client **Secure connection for servicing**

- VPN tunnel secured via smartcard (optional software certificate also available)
- Includes X-Remote for secure remote desktop connection
- Configurable and secure data push for provision and visualisation of remote maintenance or other big data applications
- Keep software, firmware and BIOS always up-to-date on your devices

With Big-LinX, a central platform for remote maintenance of any number of terminals is available for technicians or service groups.

*warranty period of 12 or 24 months

VMT9000 Series Technical Data

		VMT9010	VMT9012	VMT9112	VMT9015
Housing		Fanless die-casting aluminium housing powder-coated			
Touch screen		Break- and abrasion-resistant front sides			
		Resistive industrial touch screen	-		Resistive industrial touch screen
		PCAP multi-touch			
Display	LED backlight	10" TFT	12.1" TFT	12.1" TFT (widescreen)	15" TFT
	Resolution	XGA 1024 x 768 pixels	XGA 1024 x 768 pixels	WXGA 1280 x 800 pixels	XGA 1024 x 768 pixels
	Colours	max. 16.2 million	max. 16.2 million	max. 16.2 million	max. 16.2 million
		All displays are sunlight readable			
Front keys		Four freely configurable front keys			
System versions		Intel Atom® x7-E3950 2.0 GHz + 8 GB LPDDR4 RAM			
On-board mass storage		64 GB eMMC			
Mass storage		Optional: 128 GB SSD			
Interfaces	USB	1 x USB 3.0 in side cover 3 x USB 3.0			
	Serial	COM1 (RS232, 5 V supply can be switched in) Optional: COM2 (RS232)			
	CAN	Optional			
Network		2 x 1 Gbit/s Ethernet RJ45			
Wireless	Wi-Fi	Optional: IEEE 802.11 a/b/g/n/ac, incl. connection for external antenna			
	WWAN	Optional: GPRS, EDGE, HSPA+, LTE			
	WPAN	Optional: Bluetooth V5.0, V4.2, V4.1, V4.0 LE, V3.0+HS, V2.1+EDR			
Position monitoring		Optional: GPS through the connection of an external antenna			
Sound		Integrated speaker			
RFID	Supported transponders	Optional: LEGIC advant ATC, LEGIC card-in-card solution AFS, LEGIC prime MIM, NXP MIFARE DESFire, NXP MIFARE plus, NXP MIFARE Smart MX, Texas Instruments Tag-It, EM Microelectronics EM4035, Infineon my-d, NFC Forum Tag types 2/3/4, NXP Ultralight, NXP MIFARE Classic (UID), Sony Felica (plain text), Inside Contactless (UID), HID iClass (UID)			
Sensors		Brightness sensor, proximity sensor, acceleration sensor			
Power adapter (internal)		Rated voltage 12 - 48 VDCIN (tolerance: 9 - 60 VDCIN) Ignition function via vehicle ignition Optional: uninterruptible power supply (UPS), typically 20 - 30 min			
Operating system		Windows® 10 IoT Enterprise, Linux, IGEL Linux			
Weight		approx. 3.2 kg	approx. 3.65 kg	approx. 3.7 kg	approx. 4.7 kg
Environment	IP protection	IP66 all-round protection			
	Impact-resistant front	IK08 acc. to EN 62262			
	Operating temperature	-30 °C to +60 °C			
	Storage temperature	-40 °C to +85 °C			
	Humidity	95% non-condensing			
Vibration and impact		Class 5M3 acc. to EN 60721-3-5			
Accessories	Brackets	Optional: various mounting adapters and RAM mounting solutions			
	Power adapter	Optional: table power adapter 230 VAC at 24 VDC			
	Connection cable	Optional: cable kit for connection to forklifts			
	Antenna	Optional: external Wi-Fi antenna with magnetic base			
Dimensions (W x H x D)		277 x 249 x 50 mm	312 x 277 x 50 mm	331 x 256 x 50 mm	380 x 326 x 50 mm



An overview of all accessories and the technical dimensional drawings can be found at:
www.ads-tec.de/en/industrial-it/terminals/vmt9000-series/download.html



Company headquarters (above) in Nuertingen near Stuttgart, production site in Wilsdruff near Dresden

The ADS-TEC Group **Technology for Professionals**

For decades, we follow the latest technologies for the best benefit of our customers. Depth of development and process „Made in Germany“ distinguish us, so that we remain able of acting over long periods of time. On this basis we are a strong and reliable partner in the fields of “Industrial IT” and “Energy”.

Added values **For the success of our customers**

- Our products have been developed in-house for over 35 years
- 100% depth of development as basis for long-term and individual solutions
- Tailor-made solutions based on tried-and-tested standard products
- Cloud-based IIoT solution kit for Industry 4.0 applications
- Highest safety standards for worldwide data communication
- Roll-out, asset and solution management services
- References and applications in areas like automation, logistics, medical technology, food and beverage as well as agricultural and construction machinery
- Extensive range of service offerings
- Intel® Technology Provider Platinum Partner and member of the Intel® Internet of Things Solutions Alliance



ads-tec Industrial IT GmbH
Heinrich-Hertz-Strasse 1
D-72622 Nuertingen
Phone +49 70 22 25 22-200
Fax +49 70 22 25 22-402
sales@ads-tec.de
www.ads-tec.de



 **TECHNOLOGY
MADE IN GERMANY**



Industrial IT